

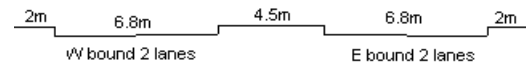
YEAR 2015

CORE STATION 5017

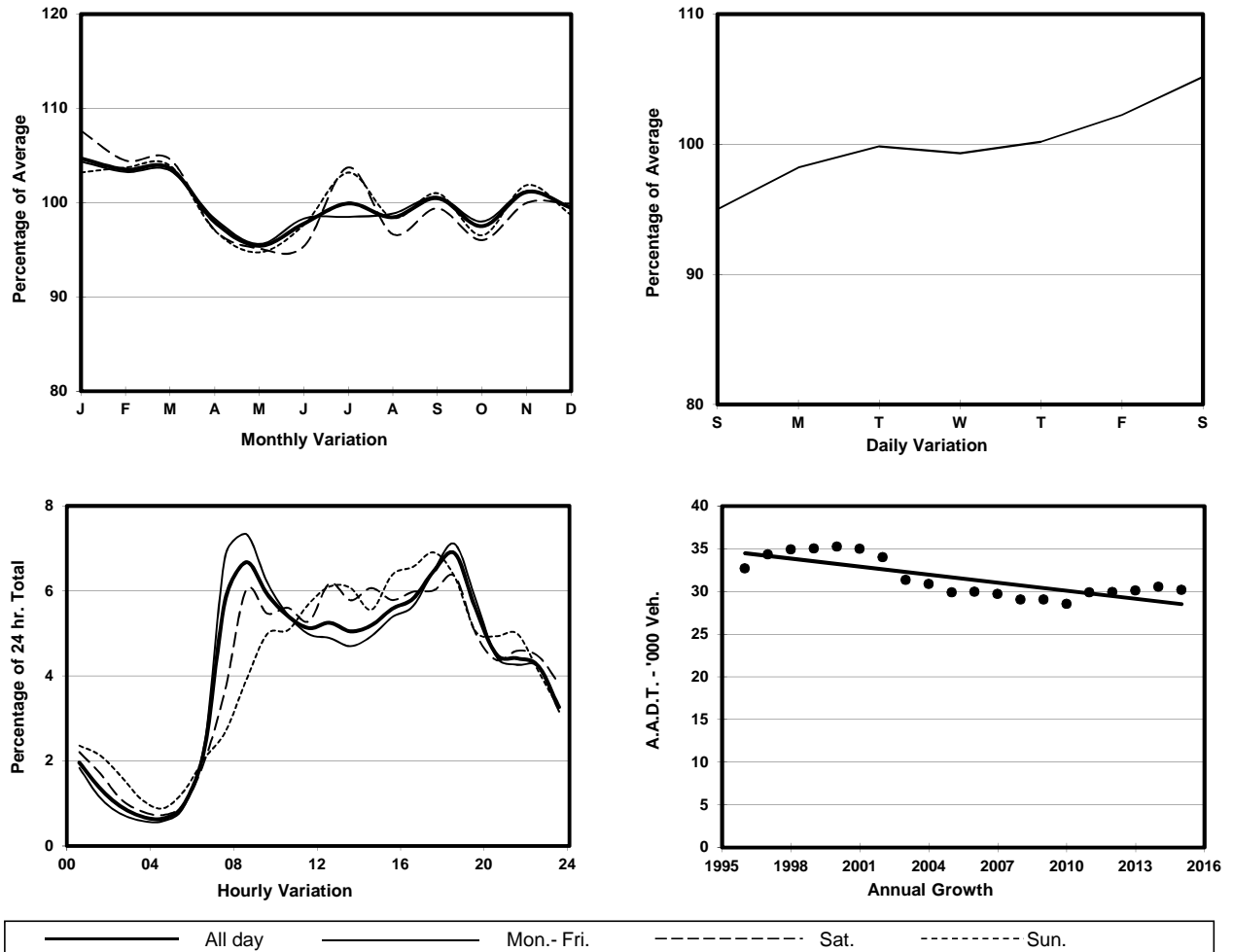
ROAD NETWORK MAJOR

ROAD TYPE RURAL ROAD

LINK CLEAR WATER BAY RD (from ANDERSON RD to HIRAM'S HIGHWAY)



1. TRAFFIC FLOW VARIATION AND GROWTH



2. TRAFFIC CHARACTERISTICS (BY DIRECTION)

Parameter	All - Day	Mon. - Fri.	Sat.	Sun.
EAST BOUND				
A.A.D.T.	14290	14290	15300	13590
R 12 / 24 - %	64.5	64.3	65.6	64.5
R 16 / 24 - %	87.1	87.7	85.8	85
AM Peak Hour	0800-0900	0800-0900	0800-0900	0900-1000
One-way flow at AM peak hour	800	860	780	640
T - % (AM)	-	6.7	-	-
PM Peak Hour	1800-1900	1800-1900	1700-1800	1600-1700
One-way flow at PM peak hour	1010	1080	980	830
T - % (PM)	-	3.2	-	-
Prop.of commercial vehicles - 16 hr.	-	6.5	-	-
WEST BOUND				
A.A.D.T.	15850	15940	16500	15070
R 12 / 24 - %	73.4	75	70.7	67.9
R 16 / 24 - %	88.6	89.5	87.4	85.6
AM Peak Hour	0800-0900	0700-0800	0800-0900	0900-1000
One-way flow at AM peak hour	1210	1390	1140	790
T - % (AM)	-	5.9	-	-
PM Peak Hour	1800-1900	1800-1900	1800-1900	1700-1800
One-way flow at PM peak hour	1060	1070	1080	1180
T - % (PM)	-	4.3	-	-
Prop.of commercial vehicles - 16 hr.	-	5.8	-	-

3. OTHER INFORMATION AND COMMENT

4. Vehicle classification and occupancy - Monday to Friday

Time		Class of vehicle									
		Motor	Private	Taxi	Private	PLB	Goods veh.		Non	Fr. Bus	
		Cycle	Car		LB		Light	M & H	Fr. Bus	SD	DD
0700-0800	Pro	3.5	62.6	8.1	1.9	9.5	7.3	1.9	4.4	0.0	0.9
	Ocp	1.2	1.1	1.9	5.4	14.6	1.1	1.0	4.9	0.0	50.1
0800-0900 Peak hour	Pro	4.2	68.6	7.7	1.5	5.3	7.8	2.9	0.7	0.0	1.3
	Ocp	1.1	1.2	1.9	2.4	15.0	1.7	1.1	9.5	0.0	53.1
0900-1000	Pro	1.9	56.9	11.2	1.2	8.1	13.5	3.9	2.1	0.0	1.3
	Ocp	1.0	1.2	2.0	2.7	15.7	1.5	1.1	18.8	0.0	37.6
1000-1100	Pro	5.4	52.3	11.9	0.2	7.8	15.0	5.1	1.1	0.0	1.1
	Ocp	1.2	1.2	1.9	2.0	13.8	1.6	1.3	1.2	0.0	37.5
1100-1200	Pro	2.5	55.3	6.7	1.4	10.5	15.7	4.2	1.8	0.0	2.0
	Ocp	1.0	1.4	1.5	1.5	11.1	1.6	1.1	3.2	0.0	24.8
1200-1300	Pro	3.8	54.1	12.8	1.9	6.7	13.4	4.8	1.0	0.0	1.4
	Ocp	1.1	1.4	2.0	5.8	11.2	1.7	1.1	1.7	0.0	30.3
1300-1400	Pro	2.7	43.3	10.9	0.7	9.2	20.8	8.2	2.4	0.0	1.7
	Ocp	1.1	1.4	1.8	2.5	12.9	1.5	1.3	22.0	0.0	28.3
1400-1500	Pro	3.2	46.7	12.0	0.9	10.7	17.7	5.4	1.6	0.0	1.9
	Ocp	1.0	1.4	1.8	2.0	13.6	1.4	1.5	1.4	0.0	25.6
1500-1600	Pro	3.4	52.5	8.4	3.4	8.4	16.2	3.9	2.5	0.0	1.5
	Ocp	1.1	1.3	1.7	6.4	12.7	1.4	1.3	14.8	0.0	34.0
1600-1700	Pro	4.5	47.2	13.1	0.3	9.3	16.7	4.5	3.0	0.0	1.3
	Ocp	1.1	1.3	1.3	3.0	14.7	1.6	1.2	3.6	0.0	54.2
1700-1800	Pro	5.9	54.0	10.4	1.7	11.6	11.8	1.5	1.7	0.0	1.4
	Ocp	1.3	1.3	2.0	9.1	12.5	1.5	1.0	10.0	0.0	64.6
1800-1900	Pro	5.9	63.5	10.1	0.2	10.8	5.6	0.7	1.4	0.0	1.6
	Ocp	1.0	1.2	1.9	1.0	15.7	1.1	1.0	18.3	0.0	64.1
1900-2000	Pro	3.1	64.7	14.1	0.0	10.2	5.5	0.4	0.7	0.0	1.3
	Ocp	1.3	1.3	2.0	0.0	12.1	1.3	1.5	21.7	0.0	44.4
2000-2100	Pro	4.2	62.8	15.5	0.3	8.8	6.4	0.3	0.3	0.0	1.4
	Ocp	1.3	1.3	1.8	1.0	9.9	1.4	1.0	5.0	0.0	23.3
2100-2200	Pro	2.1	64.5	16.0	0.0	11.5	3.7	0.0	0.4	0.0	1.8
	Ocp	1.4	1.3	1.9	0.0	10.8	1.7	0.0	9.0	0.0	20.4
2200-2300	Pro	4.7	57.1	19.3	0.0	11.8	4.7	0.0	0.4	0.0	1.9
	Ocp	1.3	1.3	1.8	0.0	10.2	1.2	0.0	2.0	0.0	15.2
16 hours	Pro	3.9	57.3	11.4	1.0	9.2	11.2	3.0	1.7	0.0	1.4
	Ocp	1.2	1.3	1.8	4.7	13.1	1.5	1.2	9.5	0.0	39.2

Legend

Pro. Proportion of vehicles in % (Sum may not add up to 100% due to figure rounding)*

Ocp. Average occupancy of vehicles including both driver and passengers*

M&H Medium and Heavy

* All traffic data are collected from combined bounds except for one way traffic